

CONNECT • CONFIGURE • CONTROL

BLAZE

04 PowerZone™
Connect 2U

08 PowerZone™
Connect 1U

12 Wall-S1

18 PowerZone™
Control

24 PowerZone™

TABLE OF CONTENT

Blaze Audio specialize in professional solutions for the commercial audio market.

Our products deliver the power and exceptional sound performance demanded in commercial locations, and the technology, quality, and reliability expected by the professional audio market.

BLAZE-AUDIO.COM

BLAZE

MORE POWER STILL CONNECTED

The PowerZone™ Connect 2U format amplifiers are solid, full rack, DSP amplifiers that deliver flexible, reliable power output with a total system power of 1000W, 1500W, 2000W and 3000W – in both 2 and 4 channel versions.



PowerZone™
Connect 2U



1002
1000 W | 2 CH



1502
1500 W | 2 CH



2004
2000 W | 4 CH



3004
3000 W | 4 CH

PowerZone™ Connect series 2U

The PowerZone™ Connect 2U series is a line of ultra-reliable, full-matrix DSP-enabled Class-D amplifiers that delivers exceptional system configuration and flexible output, with a total system power ranging from 1000W to 3000W. The PowerZone™ Connect 2U series powers both conventional low-impedance (2Ω to 16Ω) loudspeakers and constant voltage (70V/100V) transformer-coupled loudspeakers, and features automatic power-sharing technology for proportional distribution in both Lo-Z and Hi-Z modes.

Our intuitive PowerZone™ Control web app is built into all our PowerZone™ Connect amplifiers for easy system setup. PowerZone™ Control facilitates effortless customization of even the most challenging audio/voice systems by delivering many DSP configuration options and tuning features, including multi-zone setup, input mixing, priority and ducking, restriction, input and output EQ, S/PDIF output routing, high-pass filter, speaker presets, delay, Wall-S1 controller configuration, Sine generator, and much more.



KEY FEATURES

- Full rack form factor
- Full-matrix DSP configuration via PowerZone™ Control web app (built-in)
- Hybrid power distribution in both Lo-Z and Hi-Z
- Powered by Pascal UMAC™ Class-D technology
- Flexible power sharing across output channels
- S/PDIF input/output
- Configurable GPIO
- ErP and Energy Star compliant
- UL listed audio equipment

TECHNICAL OVERVIEW

Use QR to access full datasheet



1. **RJ45 connection** – Direct Network access (Ethernet)
2. **Wall control input** – Mute/Std +more – Selectable in Control SW
3. **Wi-Fi antenna**
4. **Digital audio in/out**
5. **4 x Unbalanced RCA input**
6. **Balanced inputs** – Mic or line inputs – Sensitivity selectable in Control SW
7. **4 x Lo-Z outputs or 2 x Hi-Z outputs**
8. **Mains Power IEC 90-268Vac input**

*Product shown as example is PowerZone™ Connect 4 Channel version (3004) also available in 2 Channel versions

MODEL OVERVIEW



Model	PowerZone™ Connect 1002	PowerZone™ Connect 1502	PowerZone™ Connect 2004	PowerZone™ Connect 3004
Channels	2 x Lo-Z/1 x Hi-Z	2 x Lo-Z/1 x Hi-Z	4 x Lo-Z/2 x Hi-Z	4 x Lo-Z/2 x Hi-Z
Output Power @ 2Ω	2 x 500 W (SE)	2 x 750 W (SE)	4 x 500 W (SE)	4 x 750 W (SE)
Output Power @ 4Ω	2 x 500 W (SE) 1 x 1000 W (BTL)	2 x 750 W (SE) 1 x 1500 W (BTL)	4 x 500 W (SE) 2 x 1000 W (BTL)	4 x 750 W (SE) 2 x 1500 W (BTL)
Output Power @ 8Ω	2 x 250 W (SE) 1 x 1000 W (BTL)	2 x 400 W (SE) 1 x 1500 W (BTL)	4 x 250 W (SE) 2 x 1000 W (BTL)	4 x 400 W (SE) 2 x 1500 W (BTL)
Output Power @ 70V	1 x 1000 W (BTL)	1 x 1200 W (BTL)	2 x 1000 W (BTL)	2 x 1200 W (BTL)
Output Power @ 100V	1 x 1000 W (BTL)	1 x 1500 W (BTL)	2 x 1000 W (BTL)	2 x 1500 W (BTL)
Total System Power	1000 W	1500 W	2000 W	3000 W

BLAZE

ALL SET-UP FROM YOUR PHONE

The PowerZone™ Connect 1U series is a line of DSP-enabled Class-D amplifiers designed to make system installers' lives easier, offering unparalleled reliability and efficiency, along with exceptional system configuration. The ultra-compact form factor, makes them an ideal choice for audio/voice installation projects with limited space constraints that demand high-output performance.



PowerZone™
Connect 1U



122

125 W | 2 CH



252

250 W | 2 CH



254

250 W | 4 CH



504

500 W | 4 CH

PowerZone™ Connect series 1U

The PowerZone™ Connect 1U series is a line of DSP-enabled Class-D amplifiers designed to make system installers' lives easier, offering unparalleled reliability and efficiency, along with exceptional system configuration. The ultra-compact form factor, makes them an ideal choice for audio/voice installation projects with limited space constraints that demand high-output performance.

The 1U family powers both conventional low-impedance (4Ω to 16Ω) loudspeakers and constant voltage (70V/100V) transformer-coupled loudspeakers, and features automatic power-sharing technology for proportional distribution in both Lo-Z and Hi-Z modes.

Our intuitive PowerZone™ Control web app is built into all our PowerZone™ Connect amplifiers for easy system setup. PowerZone™ Control facilitates effortless customization of even the most challenging audio/voice systems by delivering many DSP configuration options and tuning features, including multi-zone setup, input mixing, priority and ducking, restriction, input and output EQ, S/PDIF output routing, high-pass filter, speaker presets, delay, Wall-S1 controller configuration, Sine generator, and much more.



KEY FEATURES

- Ultra-compact ½-rack form factor
- Full-matrix DSP configuration via PowerZone™ Control web app (built-in)
- Hybrid power distribution in both Lo-Z and Hi-Z
- Powered by Pascal UMAC™ Class-D technology
- Flexible power sharing across output channels
- S/PDIF input/output
- Configurable GPIO
- ErP and Energy Star compliant
- UL listed audio equipment

TECHNICAL OVERVIEW

Use QR to access full datasheet



1. **RJ45 connection** – Direct Network access (Ethernet)
2. **Wall control input** – Mute/Std +more – Selectable in Control SW
3. **Wi-Fi antenna**
4. **Digital audio in/out**
5. **4 x Unbalanced RCA input**
6. **Balanced inputs** – Mic or line inputs – Sensitivity selectable in Control SW
7. **4 x Lo-Z outputs or 2 x Hi-Z outputs**
8. **Mains Power IEC 90-268Vac input**

*Product shown as example is PowerZone™ Connect 4 Channel version (504) also available in 2 Channel versions

MODEL OVERVIEW



Model	PowerZone™ Connect 122	PowerZone™ Connect 252	PowerZone™ Connect 254	PowerZone™ Connect 504
Channels	2 x Lo-Z/1 x Hi-Z	2 x Lo-Z/1 x Hi-Z	4 x Lo-Z/2 x Hi-Z	4 x Lo-Z/2 x Hi-Z
Output Power @ 4/8Ω	2 x 60 W	2 x 125 W	4 x 60 W	4 x 125 W
Output Power @ 70/100V	1 x 125 W	1 x 250 W	2 x 125 W	2 x 250 W
Powershare (up to) Across all channels	1 x 125 W	1 x 250 W	1 x 250 W	2 x 250 W
Power Consumption	75W	75W	75W	150W
Dimensions	44 x 220 x 213 mm (1.7 x 8.7 x 8.4 in)	44 x 220 x 213 mm (1.7 x 8.7 x 8.4 in)	44 x 220 x 319 mm (1.7 x 8.7 x 12.6 in)	44 x 220 x 319 mm (1.7 x 8.7 x 12.6 in)
Total System Power	125 W	250 W	250 W	500 W

BLAZE



TAKE CONTROL WITH WALL-S1

The Wall-S1 is a wall mounted networked/PoE controller for remote control of any Blaze Audio PowerZone™ Connect amplifier.

Wall-S1



W-EU
WHITE



B-EU
BLACK



W-US
WHITE



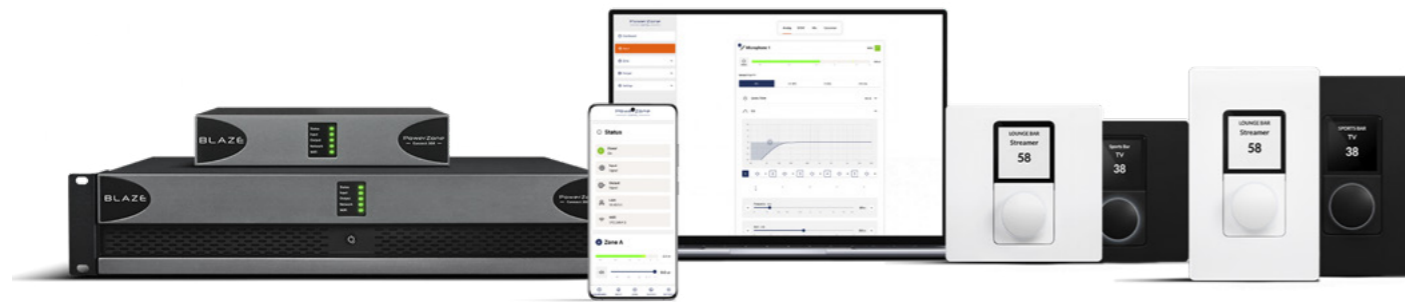
B-US
BLACK



Wall-S1 controller

The Wall-S1 is a wall mounted networked/ PoE controller for remote control of any Blaze Audio PowerZone Connect amplifier. It enables end user control of input source and volume, as well as many advanced features and settings that system installers can configure and customise to meet the needs of a specific location. It is simple to set up, configure, and customize any installed system, and any sound zone.

With the possibility to pair up to 8 x Wall-S1 controllers per amplifier, and assign the devices to any of the configured audio zones, it means installers can easily configure projects with this simple solution. With real-time syncing of devices on the same zone, PIN code protection for system security and access, and customisable colour screen and backlight – some of the advanced features that can be personalized to ensure the perfect fit for each location.

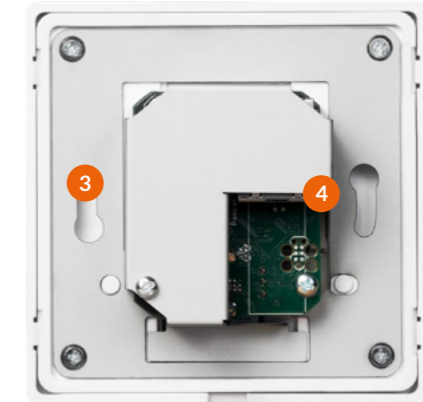
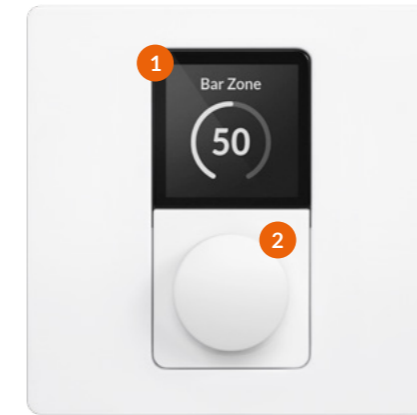


KEY FEATURES

- Danish-designed, high-performance polymer material with a touch-friendly matte finish and concealed screws
- Available in EU and US versions, standard white RAL9003 and black RAL9005
- 4 color screen schemes, 4 brightness and 4 button backlight options
- Instant network pairing and configuration for up to 8 Wall-S1 controllers with each
- PowerZone™ Connect amplifier
- Optional 4-digit PIN code protection
- Works with PowerZone™ Connect amplifiers



TECHNICAL OVERVIEW



1. LCD Screen – 240x240px in full RGB
2. Control Button – Push, Hold, Rotate

3. Mounting holes – fits standard electrical boxes
4. PoE Connection – connection and power in-one

MODEL OVERVIEW



Model	W-EU	B-EU	W-US	B-US
Amplifier Compatibility	BLAZE AUDIO - PowerZone™ Connect series			
Colour	White (RAL9003)	Black (RAL9005)	White (RAL9003)	Black (RAL9005)
External Dimensions (H x W)	86.79 x 86.79 mm (3.42 x 3.42 in)		115.1 x 70.6 mm (4.53 x 2.78 in)	
Weight	120g (4.2oz.)		120g (4.2oz.)	
Maximum Cable Length (CAT 5e)	100m (328ft)			
Power Consumption	PoE Class 1 / 3.84 W max			
Power Supply	Power to the RJ45 ethernet port on the rear of device using a category 5e cable (or faster STP) with the use of a standard PoE switch, or PoE injector			

BLAZE

Full DSP configuration made easy from any device.

Our web app, PowerZone™ Control, is the most versatile DSP controller available for configuring audio/voice systems in locations requiring multi-zone audio set up with multiple mic talk overs.

PowerZone™
Control



Pc/Mac
ANY BROWSER



Tablet
ANY BROWSER

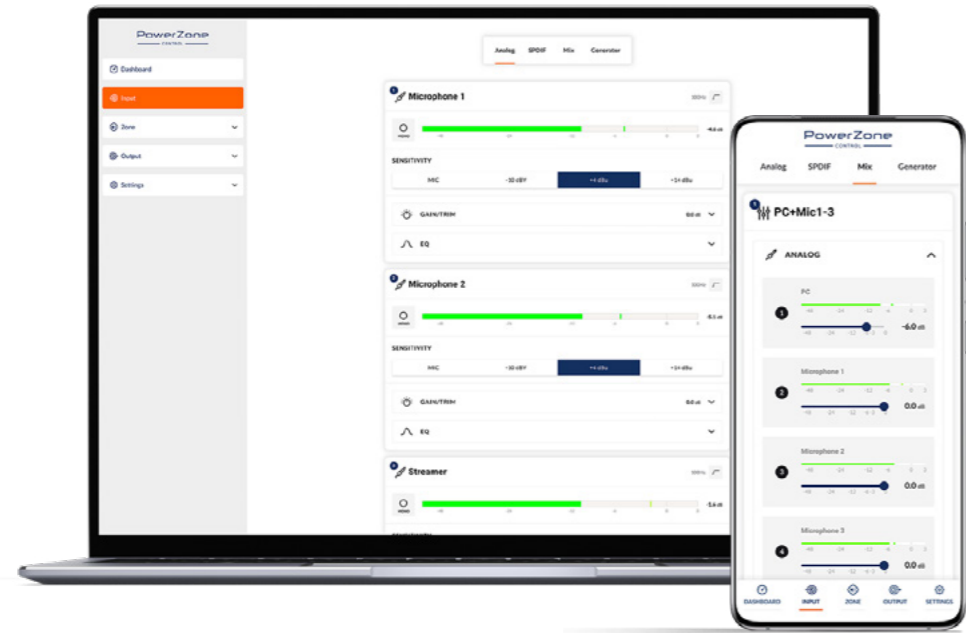


Mobile
ANY BROWSER

PowerZone™ Control

Our web app, PowerZone™ Control, is the most versatile DSP controller available for configuring audio/voice systems in locations requiring multi-zone audio set up with multiple mic talk overs. PowerZone™ Control facilitates effortless customization of even the most detailed audio/voice systems and adept management of multiple DSP configurations and tuning features, such as multi-zone setup, input mixing, priority and ducking, restriction, input and output EQ, S/PDIF output routing, high-pass filter, speaker management and presets, delay, Wall-S1 controller configuration, Sine generator, and much more.

PowerZone™ Control caters to the demanding requirements of advanced system installs in locations such as retail stores, restaurants, hotels, educational facilities, theatres, bars, cafes, fitness locations, vast hospitality spaces, and spaces with multiple meeting/conference rooms. PowerZone™ Control is embedded in our PowerZone™ Connect full Matrix DSP amplifiers, and can be accessed from any device and browser via the PowerZone™ Connect built-in Wi-Fi or RJ45 network port.

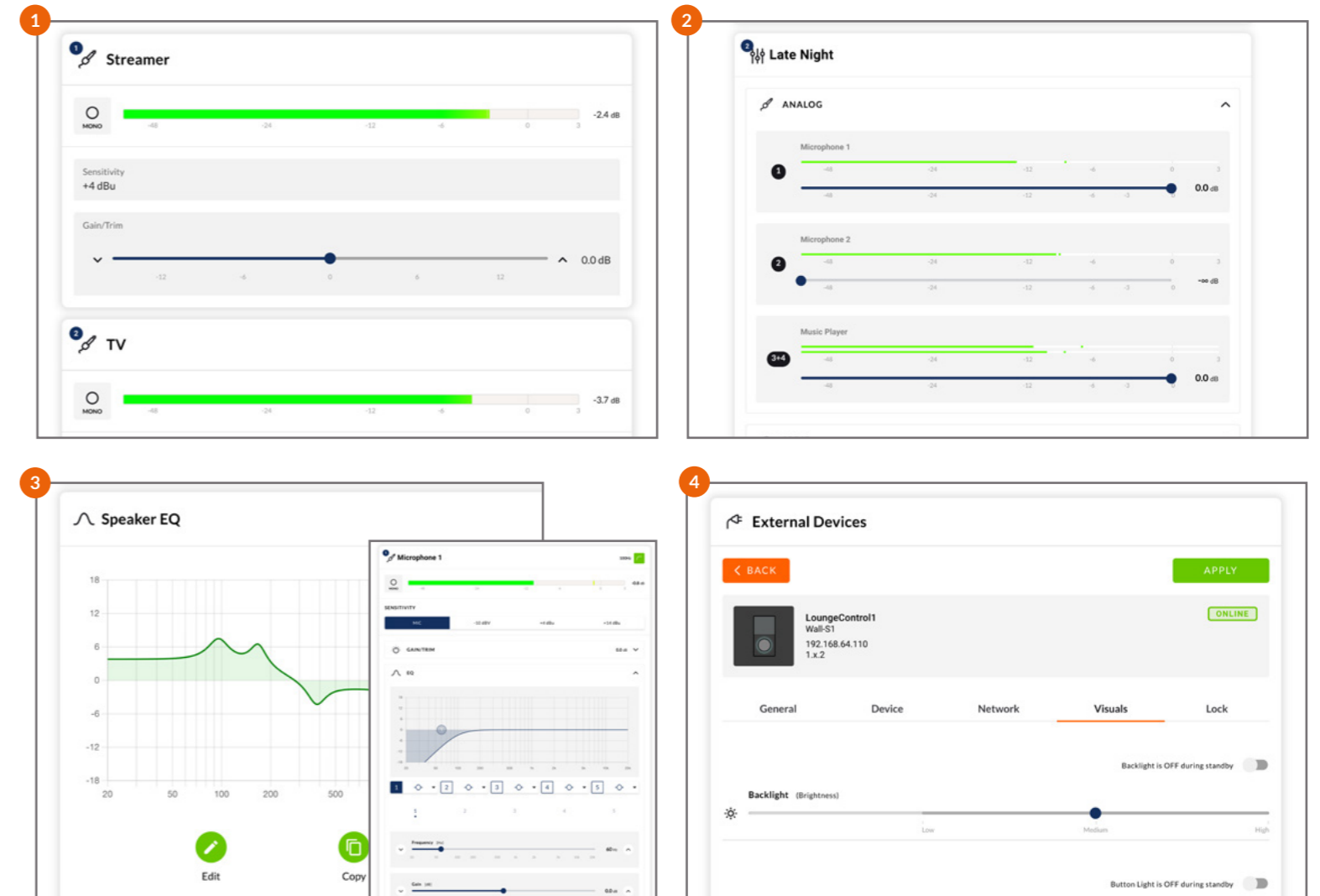


KEY FEATURES

- Multi-Zone setup: Configure a complex multi-zone system with advanced settings and zone management
- Input mixing: Combine input sources in 2 or 4 separate mixers
- Priority and ducking: Configure priority input and ducking to override primary audio in zones
- Input and output EQ: Virtual parametric EQ on each analog input and all outputs
- S/PDIF output routing; Route zones and inputs to S/PDIF and expand the install with another amplifier
- High-pass filter for better mic speech clarity & natural sound
- Speaker presets: Apply speaker presets for brands like Bose, Yamaha, JBL, Sonance and more, or create your own
- Delay: Add up to 100.00 ms of delay to any output (112.50ft/34.3m)
- In room controller configuration: Configure Blaze Audio Wall-S1 controllers and 3rd party controller brands like Crestron, Control4, and Q-Sys

TECHNICAL OVERVIEW

Use QR to try it for yourself



1. Multi-Zone setup
2. Input mixing

3. Input and output EQ
4. External Devices (Wall Controllers)



BLAZE

FLEXIBLE, RELIABLE POWER

The PowerZone™ series of install power amplifiers are designed to provide versatile and reliable high-performance audio power.



PowerZone™



252

250 W | 2 CH



504

500 W | 4 CH



1004

1000 W | 4 CH

PowerZone™ series

The PowerZone™ series of install power amplifiers are designed to provide versatile and reliable high-performance audio power. Each output channel can be independently configured to drive either Lo-Z or Hi-Z loads – making it so much more flexible and versatile than other full rack products. This means a system can be easily configured with any power output, and drive both Lo-Z and Hi-Z loudspeakers – from just one clever amplifier. Total available power is automatically shared across channel pairs –

thanks to our power sharing technology (*252 and 504 models only). The ultra-compact PowerZone™ can be installed in locations where other products cannot – and has desk and wall mount brackets as well as full rack supports. PowerZone™ is a robust and energy-efficient amplifier, that offers quick set-up and custom configuration options, and like all PowerZone™ products, this reliable, high-performance amplifier has a 5-year warranty.



KEY FEATURES

- All channels deliver low & high impedance loads – meaning one amplifier can replace two, and saves you costs and installation time
- Total power is automatically shared across the output channels – use one PowerZone™ amp to utilize the power where you need it (*model-specific feature)
- Ultra-compact form factor – means the ½ rack PowerZones are so small and neat they can be installed in spaces where other brands cannot
- Consolidate products and brands – save the hassle of sourcing multiple amplifiers when PowerZone™ can be used on many different install sites
- Easy to configure DIP Switches - allow you to set up on-site as you need and has front panel control lock to stop unwanted changes to your setup
- GPIO interface – enables adding of any standard remote control (potentiometer) to the system
- Class leading energy efficiency – means a day-to-day energy saving and long-term low cost of ownership
- Pascal’s UMAC™ Class-D amplifier technology – with market proven, ultra-reliable U-PRO amp modules
- PowerZone™ quality and reliability are backed up with a 5-year warranty

TECHNICAL OVERVIEW

Use QR to access full datasheet



1. Power LED – Standby Indicator
2. Channel LED – Signal Status Indicators
3. Channel Gain Adjust Controls (one control for each channel)
4. Maintenance Port (Only Used by Blaze / Manufacturer)
5. DIP Switches (see user Manual for configuration options)

6. GPIO Connections (external control & monitoring)
7. INPUT – All Channels
8. OUTPUT – All Channels
9. Mains Power

*Product shown as example is PowerZone™ 504

MODEL OVERVIEW



Model	PowerZone™ 252	PowerZone™ 504	PowerZone™ 1004
Channels	both channels Lo-Z and/or Hi-Z	all channels Lo-Z and/or Hi-Z	all channels Lo-Z and/or Hi-Z
Output Power @ 4/8Ω	2 x 125 W	4 x 125 W	4 x 250 W
Output Power @ 70/100V	2 x 125 W	4 x 125 W	4 x 250 W
Powershare (up to) Across all channels	1 x 250 W	2 x 250 W	N/A
Power Consumption	75 W	150 W	300 W
Dimensions	44.5 x 220 x 262 mm (1.75 x 8.66 x 10.31 in)	44.5 x 220 x 337 mm (1.75 x 8.66 x 13.27 in)	44.5 x 440 x 292 mm (1.75 x 17.32 x 11.50 in)
Total System Power	250 W	500 W	1000 W



EUROMAST ROTTERDAM POWERED BY BLAZE AMPLIFIERS

The lift cabin of the Euromast is equipped with a 360 degrees Spatial sound system. This sends the sound through 20 speakers and creates a virtual 3D surround sound effect. Each speaker is individually controlled and provides a unique audio experience that surrounds you, putting you right in the middle of the action. The entire show is timecode-controlled, so that the light, the soundtrack, the voice-over, and the movement of the lift all run at exactly the same time.

To get the immersive sound experience perfect, there was a need for a compact amplifier with perfect sound quality. With 5 x **PowerZone™ Connect 254** used to drive the 2-way speakers, which give the sound directly to the visitor and 1 x **PowerZone™ Connect 504** used to drive the 2 x sub speakers in the lift.

Installation by: Ata Tech



HONEST GREENS IN PORTO POWERED BY BLAZE AMPLIFIERS

The Honest Greens restaurant chain has recently opened a new location in the heart of Porto, on Rua de Santa Catarina, and selected the Blaze **PowerZone™ 1004** to power the audio.

Honest Greens has many locations in Madrid, Barcelona, Lisbon and now Porto – where they tasked Lisbon based Garrett Audiovisuais to implement the Audio solution for this exciting new space. Blaze Audio brought its amplification technology with the **PowerZone™ 1004** model – chosen for its reliability – working in conjunction with a digital audio processor.



Installation by: Garrett Audiovisuais



Retail Environments

Music plays a crucial role in the success of retail businesses as it affects customer mood, behavior, and purchase decisions. At Blaze Audio, we provide a variety of system designs featuring amplifier models ranging from 60W to 750W per channel, which are easy to configure. Our PowerZone™ Control web app allows you to restrict or set maximum and minimum volume levels across different retail zones. Additionally, our networked wall controllers help manage the source and volume, providing customization and PIN code protection for added security.



Bars and Cafes

Our selection of amplifiers is designed to meet the sound pressure needs of any hospitality project, regardless of its size. With channel output available in both Lo-Z and Hi-Z, as well as smart power sharing and easy system setup, PowerZone™ amplifiers are an ideal choice for bars and cafes. By utilizing our PowerZone™ Control web app and networked controllers, any project can be swiftly configured to provide exceptional background sound in locations with multiple zones.



Restaurant and dining

Regardless of the size of the restaurant, music is an essential element of the overall dining experience. As different areas within a restaurant have varying audio requirements, a flexible audio system is necessary. For instance, busy bar areas may require higher sound pressure levels, while cosy dining areas may require much less. Our PowerZone™ amplifiers provide the ideal solution, delivering the required power output and flexibility to provide sound to any zone or room, regardless of its size.



Hotels and Education sites

Our PowerZone™ Connect amplifier series and web app, PowerZone™ Control, provide effortless customization for full DSP configuration of audio/voice systems in locations requiring multi-zone setups with sound and multiple mic talk overs. This is particularly crucial in hotels, educational facilities, auditoriums, theaters, and vast hospitality spaces with multiple meeting rooms. Furthermore, our S/PDIF output routing feature facilitates zone and input routing allowing easy system expansion through multiple interconnected amplifiers.



Fitness locations

Fitness projects demand high-quality sound systems with exceptional flexibility. Background music is played in gym and workout areas, while the same system is also required to provide full power with mic talk overs in classes such as spinning.

PowerZone™ amplifiers can handle these demanding environments, as automatic power sharing delivers the necessary power across any channel and loudspeaker setup while easy pre-set inputs for audio/voice mixes for different fitness activities can be configured using our PowerZone™ Control web app.



House of Worship

House of Worship projects require reliable, high-quality amplification of voice, often covering a large distribution area. Blaze Audio solutions are perfect for HoW projects, thanks to our high-quality amplification at low power and superior speech intelligibility. Our PowerZone™ Connect amplifiers offer a wide range of total system power, between 125W and 3000W, and can be set up with any speaker load. Moreover, our PowerZone™ Control web app simplifies audio setup, enabling multiple mic talk-overs, and making it a hassle-free process.



Corporate, Government & Enterprise

The Corporate, Government, and Enterprise sector has a wide range of applications for audio systems, with or without multiple mic talk overs, including conferences and boardrooms, meeting areas of any size, warehouses, cafeterias, and break areas. Blaze Audio is an ideal choice for these applications, as our solutions are reliable, flexible, and easy to set up and use. Our PowerZone™ amplifiers are capable of covering different sound pressure needs, and up to 8 Wall-S1 controllers can be networked to cover many rooms or large spaces.



Entertainment

Sound in entertainment venues must perform flawlessly and is often configured specifically to meet the venue's demanding requirements. Our PowerZone™ Connect amplifiers delivers the power required to support long speaker runs and high sound pressure levels while also meeting the demands of even the most challenging venues with complete stability, channel flexibility, and an embedded programmable full matrix DSP that simplifies the configuration of even the most specific sound requirements.

CONNECT • CONFIGURE • CONTROL

BLAZE-AUDIO.COM