

CPS MENUBOARD D2L 46 - 65"

comPROnents® complete solution

Item no.: 3312

The CPS Menuboard D2L 46 - 65" is a system for ceiling mounting.

The system is suitable for two screens between 46 - 65" | 117 - 165 cm screen diagonal, which are mounted side by side.

The screens are mounted in landscape orientation.

The VESA mounts can be fitted with up to VESA 600 x 400 mm max. and can also be tilted from -5° to +15°.

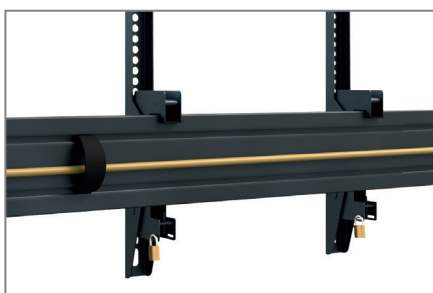
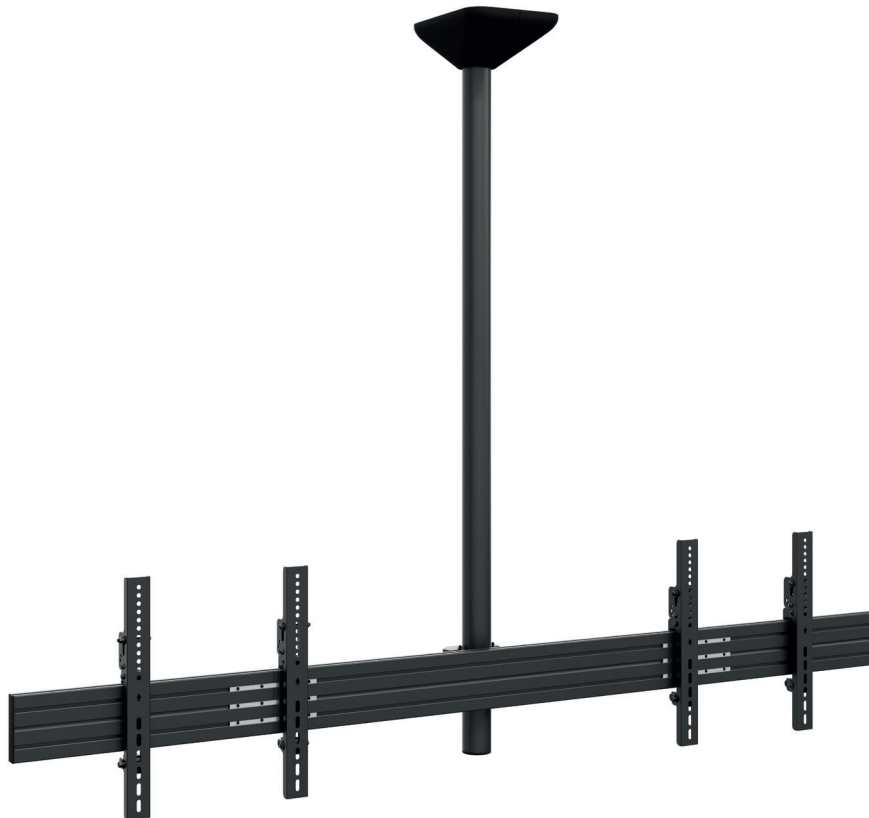
The total width of the system is 2009 mm. This can be shortened if necessary.

Cables are routed via cable clips on the rails.

The surfaces of the individual components are protected by an impact and scratch resistant powder coating in black.

The maximum load per screen is 40 kg.

The complete solution can be combined and extended with the components of the comPROnents® series without restriction and thus offer further application possibilities.



Cable management along the rails by clips



Adaptable thanks to modular design



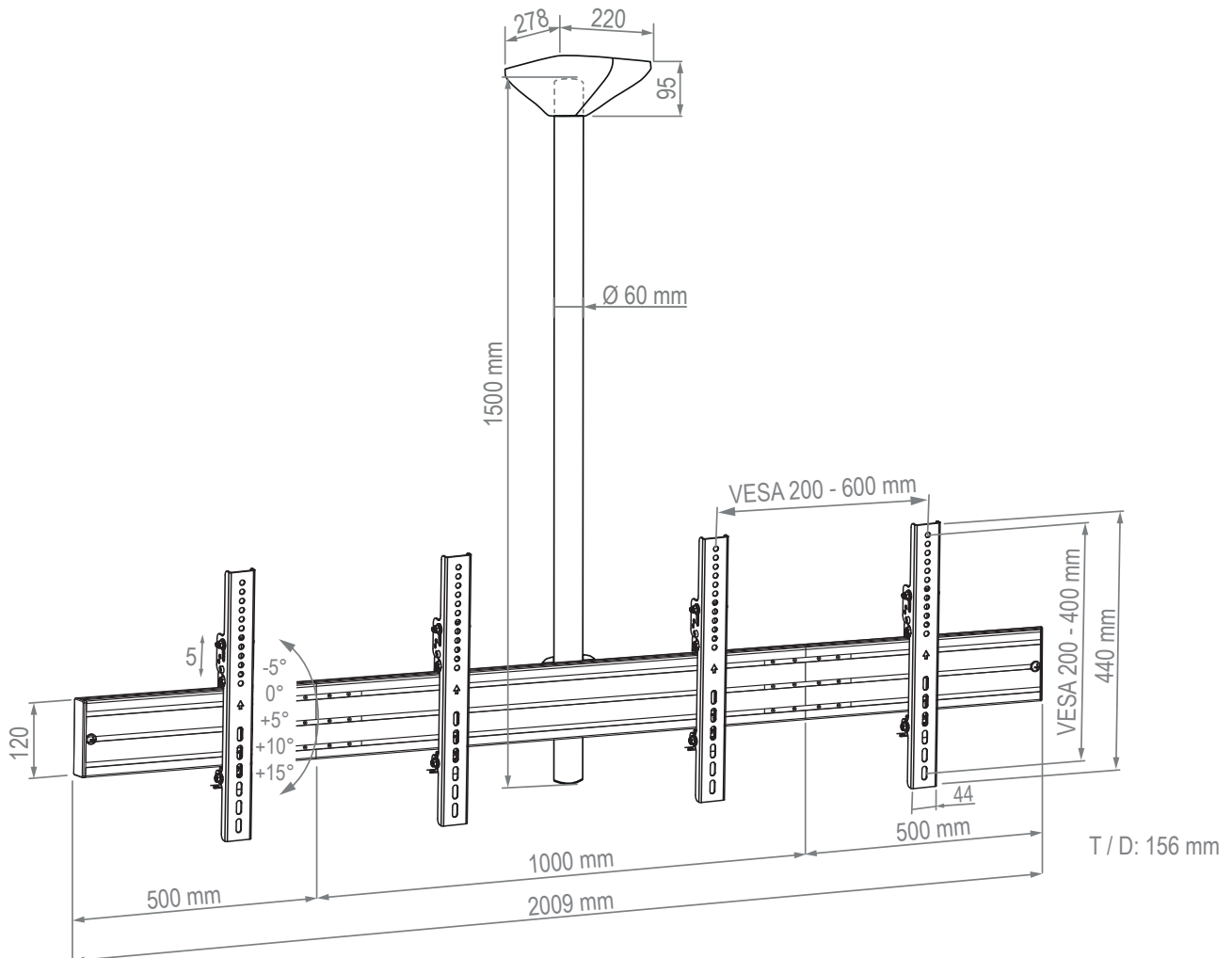
VESA max. 600 x 400 mm | -5° / +15°

CPS MENUBOARD D2L 46 - 65"

comPROnents® complete solution

Item no.: 3312

- System for ceiling mounting
- 2x 46 - 65" | 117 - 165 cm | side-by-side
- VESA max. 600 x 400 mm
- Landscape
- VESA mount tiltable from -5° to +15°
- Cable routing via cable clips on the rails
- 40 kg max. load, per screen
- 2009 mm total width - can be shortened if required
- Colour: black
- combinable & expandable with comPROnents® series



As of: 08/2024

Technical changes reserved | This document is the property of HAGOR Products GmbH. Forwarding and duplication of this document, utilization and communication of its contents are not permitted unless expressly permitted. A violation obliges you to pay compensation. All rights reserved in the event of a patent, utility model or design registration.