

## WH Synchron HD 75 - 110" Landscape Item no.: 8434

**Heavy-duty wall mount for precise alignment and easy installation**

The WH Synchron HD 75 - 110" Landscape is a tiltable heavy-duty wall mount that impresses with its well thought out design and high functionality. Supplied largely pre assembled, it enables time saving and uncomplicated installation.

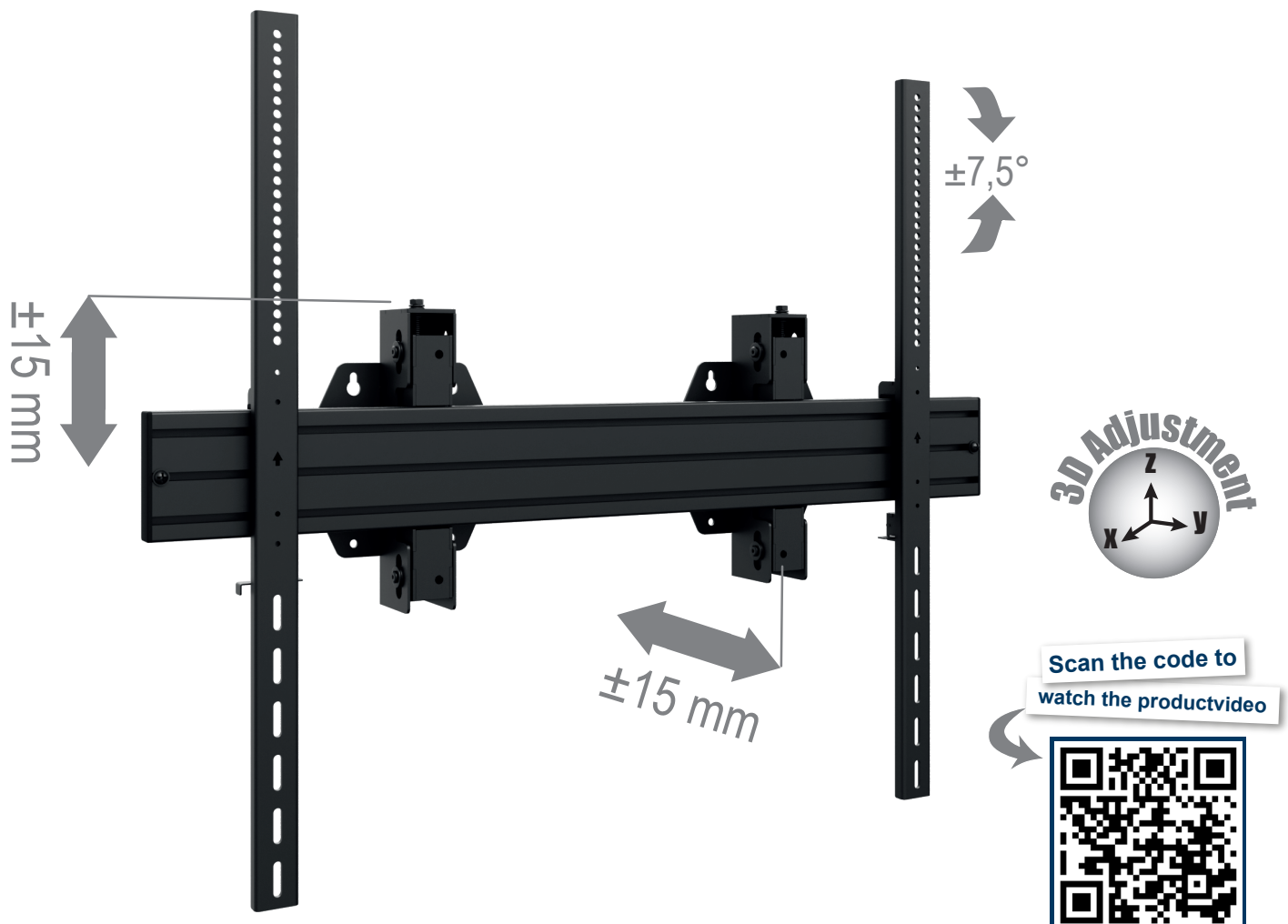
A key feature is its precise fine adjustment. The tilt can be adjusted exactly by  $\pm 7.5^\circ$ , while the depth and height can each be adjusted by  $\pm 15$  mm. This allows the screen to be optimally aligned, regardless of the spatial conditions or individual requirements.

The robust construction makes the bracket ideal for holding large and heavy screens with a size of 75 to 110" (191 - 279 cm) and a maximum weight of up to 150 kg.

It is compatible with VESA standards from min. 300 x 300 mm to max. 900 x 800 mm. The variable wall distance between 96 mm and 126 mm contributes to the adaptability of the mount.

Screens can be mounted in portrait format. Integrated cable clips on the back ensure efficient cable management. The high quality black powder coating, which is solvent free and impact and scratch resistant, guarantees a long lasting and resistant surface.

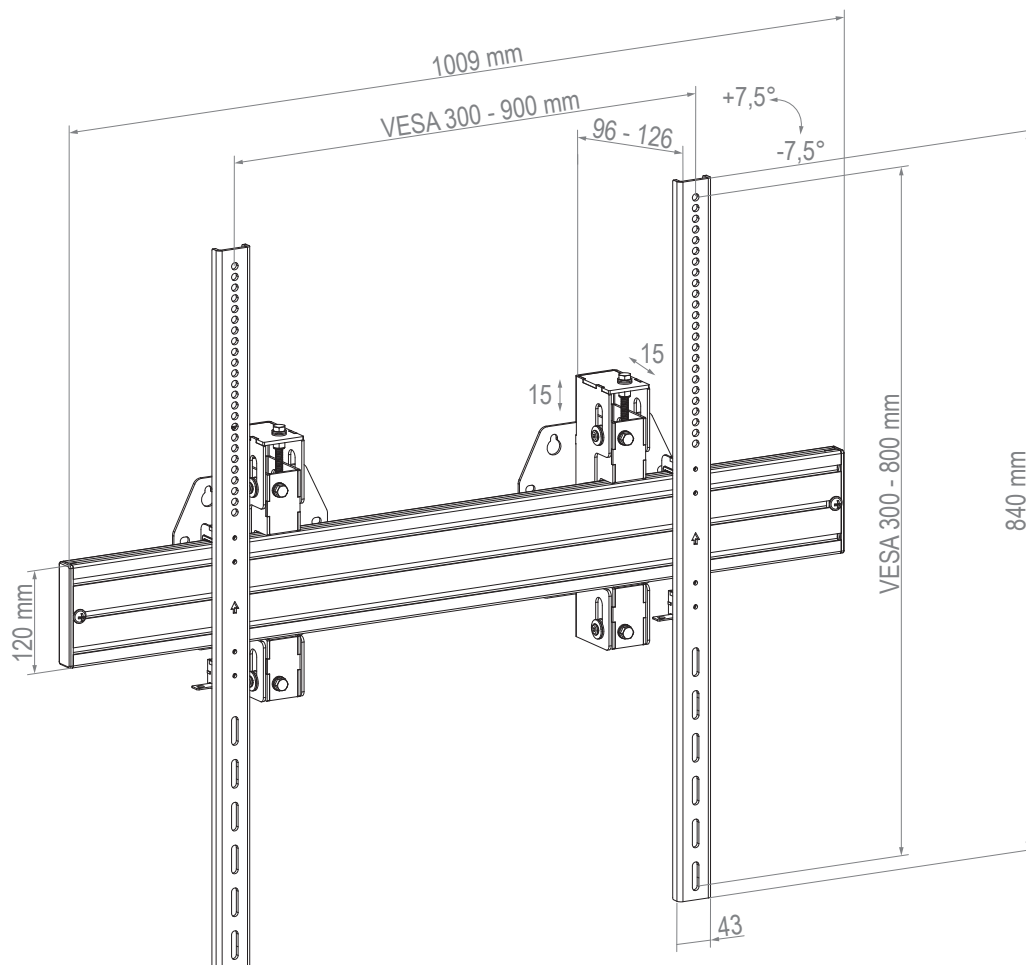
Precision, resilience and user-friendliness combined in a single product. The ideal solution for professional applications that place the highest demands on stability and flexibility.



## WH Synchron HD 75 - 110" Landscape Item no.: 8434

Heavy-duty wall mount for precise alignment and easy installation

- Tilttable heavy-duty wall mount
- 75 - 110" | 191 - 279 cm
- Landscape
- VESA standards: 300 x 300 mm, 400 x 400 mm, 600 x 400 mm, 600 x 600 mm, 800 x 600 mm, 800 x 800 mm, 900 x 600 mm, 900 x 800 mm
- $\pm 7,5^\circ$  tilt adjustment
- $\pm 15$  mm depth adjustment
- $\pm 15$  mm height adjustment
- Variable wall distance, min. 96 mm - max. 126 mm
- 150 kg load, max. | Heavy Duty
- Rearside cable clips
- Solvent free, impact and scratch resistant powder coating in black
- Quick and easy installation, as the bracket is delivered largely pre assembled
- Optional:  
VESA Adapter stripes 800 900 1000 | Item no.: 5083  
VESA Adapter stripes 1000 1500 | Item no.: 5085

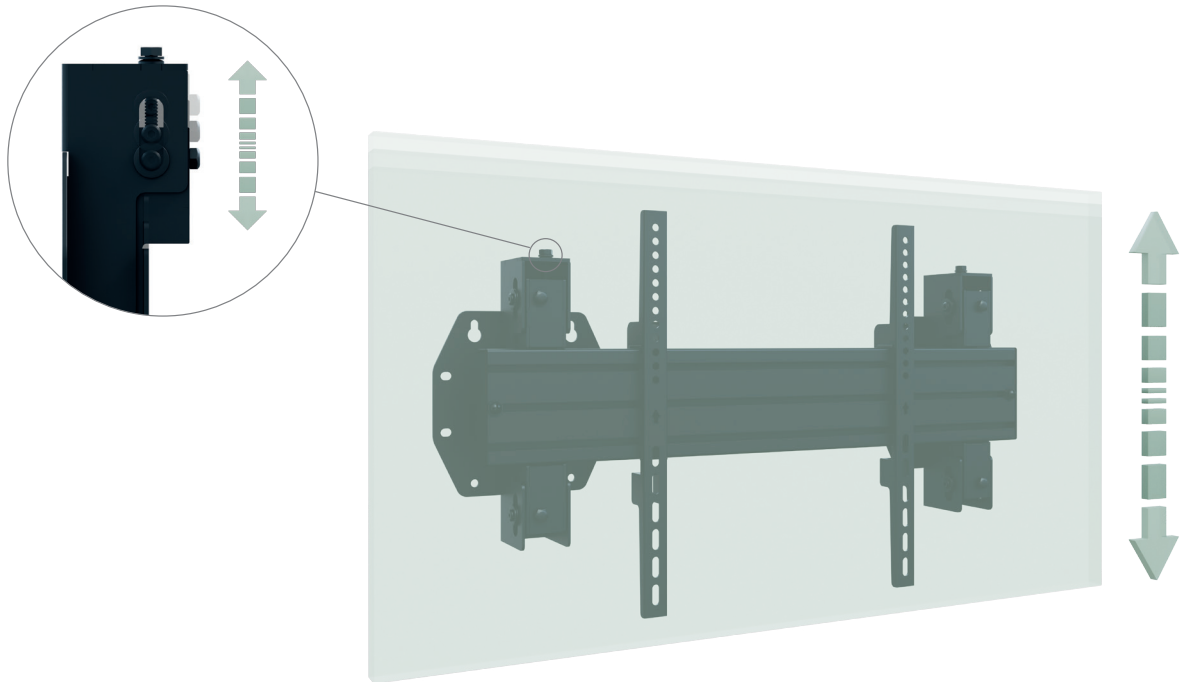


## WH Synchron HD 75 - 110" Landscape

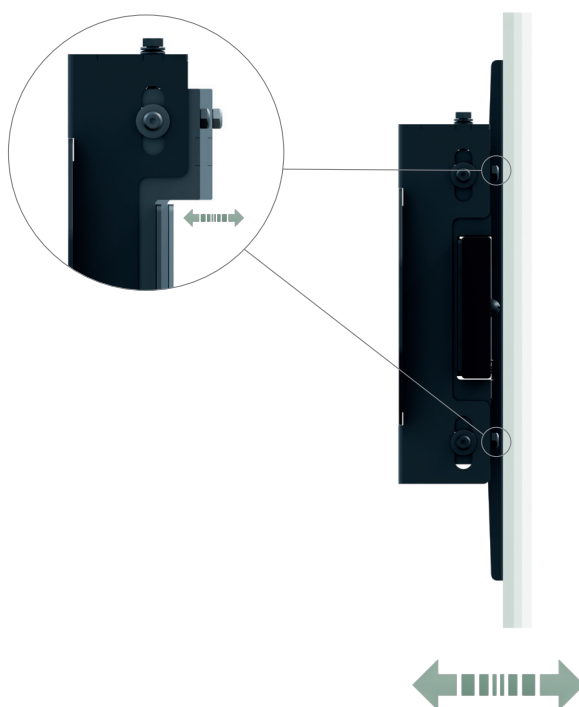
Heavy-duty wall mount for precise alignment and easy installation

Item no.: 8434

### Height adjustment



### Depth adjustment



Technical changes reserved | This document is the property of HAGOR Products GmbH. Forwarding and duplication of this document, utilization and communication of its contents are not permitted unless expressly permitted. A violation obliges you to pay compensation. All rights reserved in the event of a patent, utility model or design registration.