

vis-it[®] Enclosure 75" Landscape

Item no.: 2537

Indoor protective enclosure

The vis-it[®] Enclosure 75" Landscape is an indoor protective housing for screens with a size of 75" | 191 cm.

The included VESA mount can accommodate a maximum VESA 900 x 600 mm. The enclosure is to be mounted in landscape orientation.

Thanks to the integrated air slots an effective air circulation is ensured, preventing heat buildup inside the housing.

The protective enclosure is suitable for screens of various depths, as it features a flexible depth adjustment via a slotted hole.

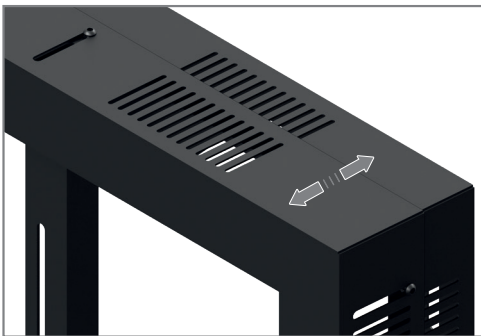
The surfaces are protected by a solvent free, impact and scratch resistant powder coating in black, ensuring

durable surface quality even with demanding daily use.

As an optional accessory, a rear cover is available for additional protection. vis-it[®] Enclosure 75" Back Cover | Item no.: 5099.

The vis-it[®] Enclosure series offers indoor protective housings for various screen sizes as well as landscape and portrait orientation.

If required, the vis-it[®] Enclosure Series can be combined with components from the CPS Series.



Depth adjustment via slotted hole



Can be combined with CPS components



Optional Back Cover available



vis-it[®] Enclosure 75" Landscape

Indoor protective enclosure

Item no.: 2537

- Indoor protective enclosure
- 75" | 191 cm screen size
- Landscape format
- VESA: max. 900 x 600 mm
- Ventilation via air slots
- Depth adjustment via slotted hole
- Screen installation depth: 25 - 75 mm
- Solvent free, impact and scratch resistant powder coating
- Colour: black (RAL 9005)
- Can be combined with CPS components
- Option:
Back Cover
vis-it Enclosure 75" Back Cover | Item no.: 5099

