

## SOPW 55" Landscape

### Outdoor enclosure with heating and ventilation

**Item no.: 2544**

This high quality outdoor enclosure is ideal for screens up to 55" (140 cm). The enclosure features a VESA mount, which can accommodate sizes from 200 x 200 mm to 800 x 600 mm. It offers a pull out function up to 648 mm, ensuring optimal service accessibility.

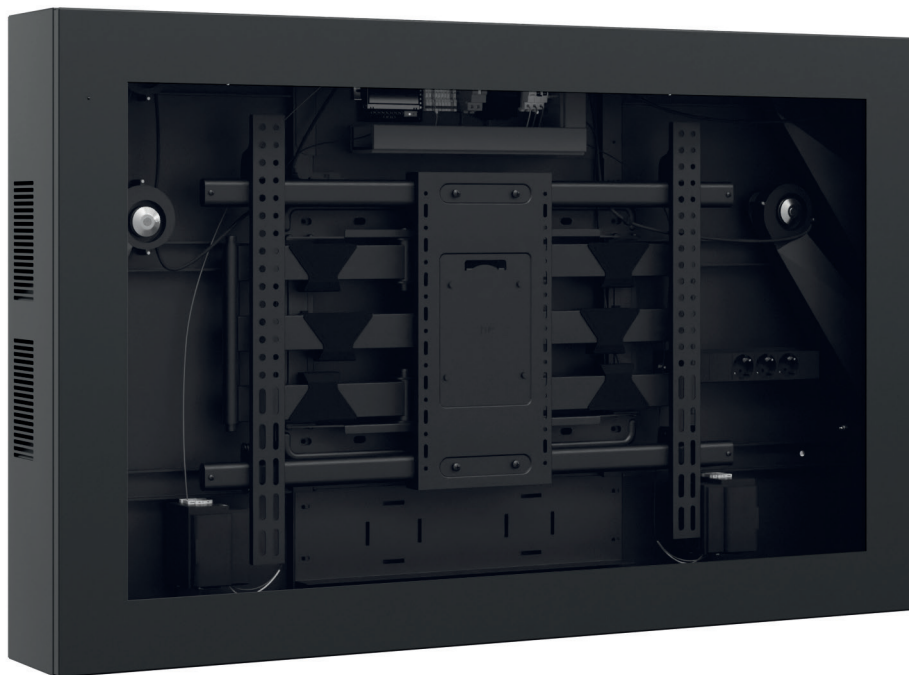
The 6.4 mm thick chemically anti reflective protective glass effectively protects the screen. The enclosure meets IP 65 / NEMA 4 (front) and IP 54 (rear) protection classes.

The protective enclosure is lockable, providing protection against unauthorized access and vandalism.

There is also enough space for a mini PC or set-top box, for example.

The thermostat- and sensor controlled temperature management, including an air curtain in front of the panel, enables operation in a temperature range from -25 °C to +40 °C\*.

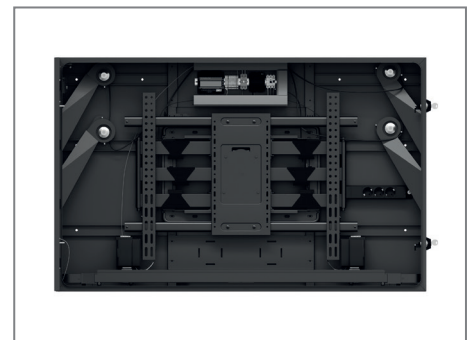
The impact and scratch resistant powder coating is solvent free and as standard dark grey (C5, RAL 7016).



Optimal service access



Simple, unobtrusive design



Functionally designed technical equipment

\*Please note! The installed screen must also be suitable for the temperature range. | Technical changes reserved.

This document is the property of HAGOR Products GmbH. Forwarding and duplication of this document, utilization and communication of its contents are not permitted unless expressly permitted. A violation obliges you to pay compensation. All rights reserved in the event of a patent, utility model or design registration.

# SOPW 55" Landscape

## Outdoor enclosure with heating and ventilation

**Item no.: 2544**

- Suitable for screens with a size of 55" | 140 cm
- VESA bracket, extendable for comfortable service min. 200 x 200 mm - max. 800 x 600 mm
- Incl. pull-out function of screen for optimal service access, max. 648 mm
- 97 mm maximum installation depth
- Enough space for mini PC or Set Top Box
- 6.4 mm thick, chemically anti reflective protective glass (VSG)
- Manufactured according to: IP 65 / NEMA 4 (front) and IP 54 (back)
- Enclosure is lockable, protection from unauthorized access and vandalism
- Thermostat and sensor controlled temperature management incl. air curtain in front of the panel
- Thanks to high quality heating and high performance ventilation suitable for an ambient temperature range between -25° C and +40° C\*

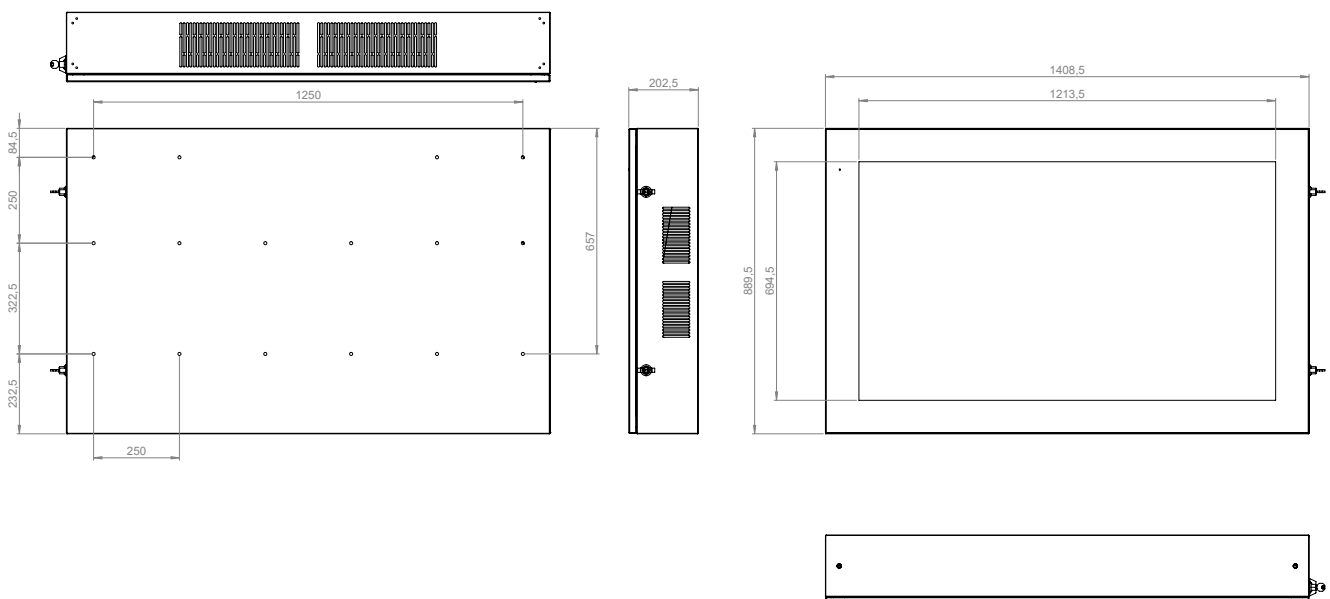
- **Material:** sheet steel, corrosion resistant coating standard C5, RAL 7016

• Optional:

- Wi-Fi antenna (Item no.: 2561)
- PCAP Touch film 20TP 55" (Item no.: 2560)
- Front glass Solarprotect 55" (Item no.: 2562)

*Solarprotect is a special IR and UV-filtering glazing that significantly reduces solar radiation exposure to the enclosure. It is recommended for use in south facing locations, in direct sunlight, in hot climates, or at exposed elevations above approximately 1000 m.*

- Logo as film plot (Item no.: 2567)
- Sensor / remote monitoring conditions (Item no.: 2568)
- Desired RAL colour (Item no.: 2570)



\*Please note! The installed screen must also be suitable for the temperature range. | Technical changes reserved.

This document is the property of HAGOR Products GmbH. Forwarding and duplication of this document, utilization and communication of its contents are not permitted unless expressly permitted. A violation obliges you to pay compensation. All rights reserved in the event of a patent, utility model or design registration.

# SOPW 55" Landscape

## Outdoor enclosure with heating and ventilation

**Item no.: 2544**

### Outdoor Enclosure – Temperature Range & Adhesion

#### 1. Technical Specifications – Climate Characteristics

Operating Temperature:	-25 °C to +40 °C
Relative Humidity:	10 % to 90 % (non-condensing)
Ventilation:	Active air circulation via integrated fan system
Sunlight Exposure:	Passive heating possible – a display with an extended temperature range may be required

#### Note:

The specified operating values apply under standard conditions with free air circulation. In cases of direct sunlight exposure or unfavourable positioning (e.g., facing south without shading), thermal heat build-up within the enclosure may occur. This can cause the internal temperature to exceed the maximum specified value.

#### 2. Safety & Operation

##### Deployment Environment & Temperature Conditions

The outdoor enclosures are designed for use outdoors under typical Central European weather conditions. The recommended operating temperature range is between -25 °C and +40 °C. Safe continuous operation assumes that the maximum ambient temperature does not exceed this range.

#### Caution:

Direct sunlight, especially with southern orientation or in fully enclosed setups, can significantly increase the internal temperature beyond the ambient temperature. This also applies in cases of limited air circulation or additional heat generated by installed devices (e.g., displays, media players, routers, etc.).

#### Device Selection Guidelines:

- Use only devices specified for elevated ambient temperatures (at least up to +50 °C).
- Check manufacturer specifications for the permissible operating temperatures of the equipment to be installed.
- The enclosure manufacturer accepts no liability for damage caused by unsuitable devices or thermal overload.

#### Recommendations to Prevent Heat Build-up:

- Avoid direct south/west orientation without shading.
- Ensure that fans and air outlets are not blocked.

\*Please note! The installed screen must also be suitable for the temperature range. | Technical changes reserved.

This document is the property of HAGOR Products GmbH. Forwarding and duplication of this document, utilization and communication of its contents are not permitted unless expressly permitted. A violation obliges you to pay compensation. All rights reserved in the event of a patent, utility model or design registration.