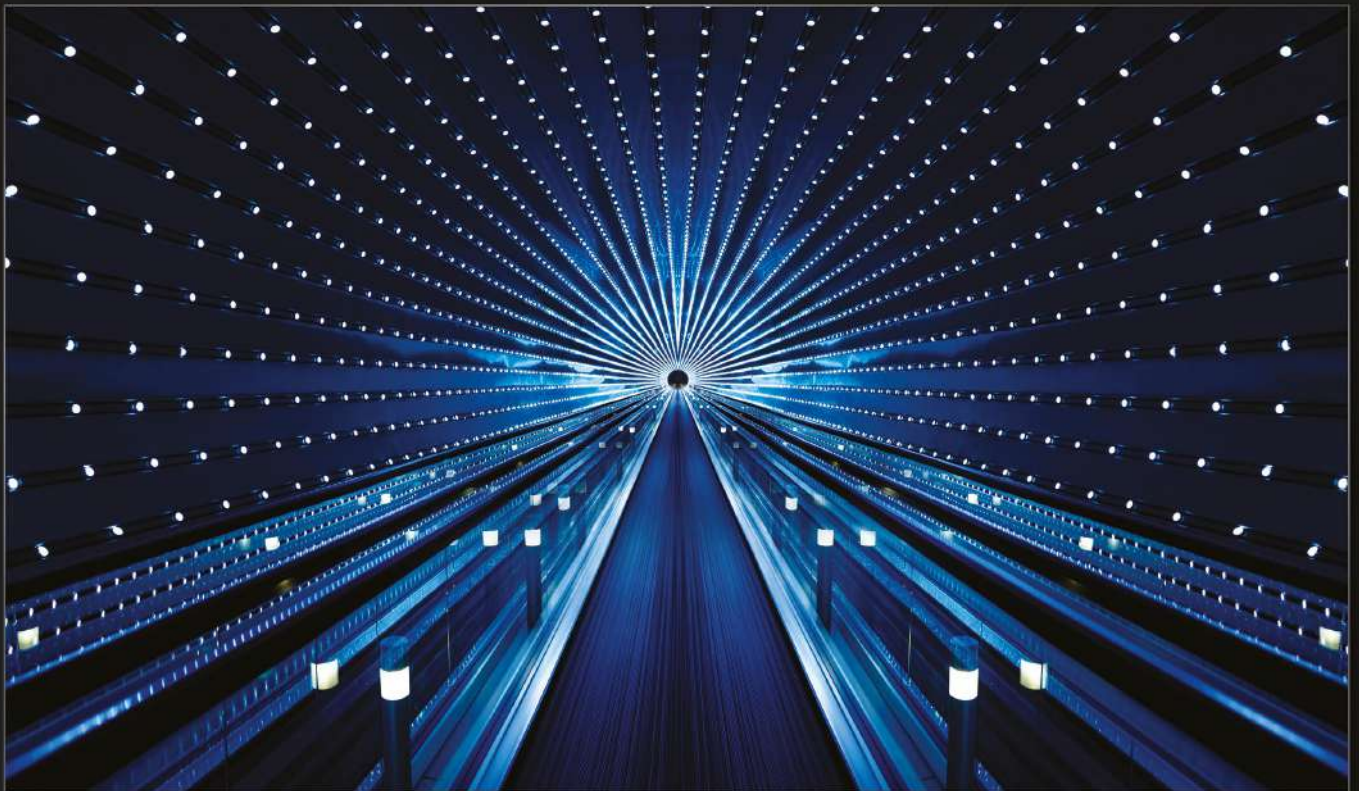


The Wall

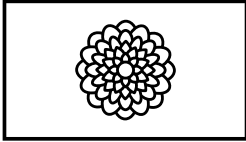
IAB Series

Adopt a new paradigm for your business



The Wall: Transform your everyday meeting experience

Innovation is never static. To strive for perfection requires a constant pursuit of greatness. To inspire and captivate with unrivaled experiences. The Wall is the epitome of innovation. It constantly delivers new avenues to create unparalleled visual statements. Redefining the LED paradigm once again, The Wall now solves the biggest industry challenge, drastically improving installation. The Wall, let it transform your business.



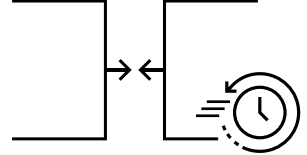
Ultimate picture quality

- Deeper black color and contrast
- Vivid, vibrant color purity
- AI optimized visuals
- Accurate color mapping and grayscale expression
- Advanced picture refinement and dynamic range
- Smooth, judder-free visuals



Simple choice

- Two sizes and two resolution options
- All-inclusive components

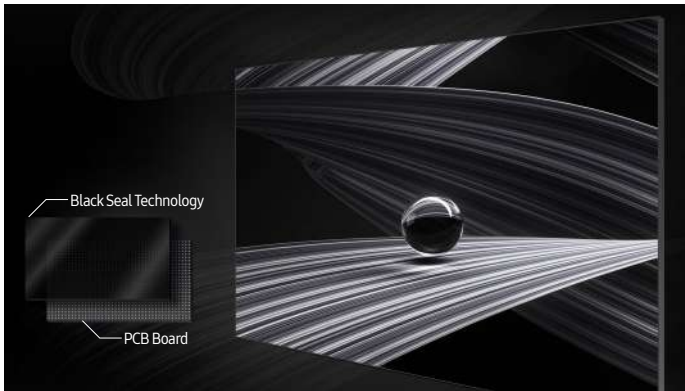


Quick installation

- Installation within 2 hours for 2 people
- Auto configuration setup



Key features



Black Seal Technology

An abyss of depth

A deep black background blankets the screen with perfect uniformity, creating a seamless canvas for purer black levels with enhanced depth that delivers unparalleled contrast and immaculate detail.



Ultra Chroma Technology

Superior color purity

Colors leap to life with spectacular vibrancy to recreate scenes as if you were there in real life. Narrower wavelengths produce RGB colors two times purer* and more accurate than conventional LEDs.

* Figure is based on internal testing standards against Samsung's conventional LED Signage.



Pre-assembled Installation

The installation process, reinvented

The Wall All-in-One drastically simplifies installation by docking the background plates and hanging just three or four preset modules, depending on the display size. Installation now takes only two hours for two people to complete the screen.

* The Wall All-in-One 110-inch model requires three preset modules. The 146-inch model requires four preset modules.

* Install time estimate based on internal testing.

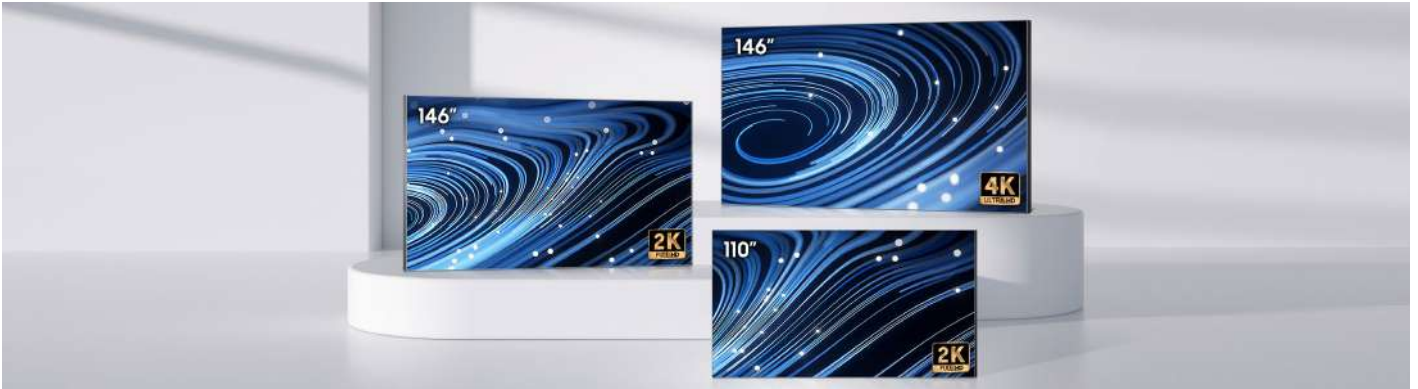


Built-in Control Box

Auto configuration setup

Time-consuming configuration between control box and cabinet is no longer needed. The Wall All-in-One integrates the control box so it's built-into the display, eliminating a cumbersome configuration process to get the display up and running faster.

Key features



Simple Choice

Critical decisions without complexity

The Wall All-in-One removes complex elements traditionally associated with LED displays, creating a streamlined purchase path. Now, make purchases based on just two factors – resolution and size – without complications such as pixel pitch or configuration.



All-inclusive Components

No extra peripherals needed

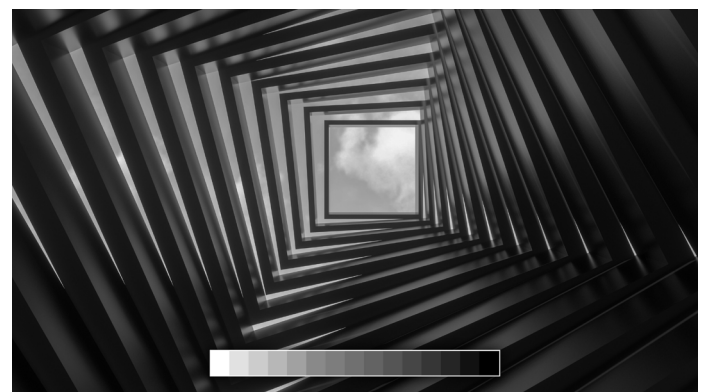
The Wall All-in-One includes everything you need to begin operations - from the control box and wall brackets to speakers and deco bezels. No additional purchases or components are required, allowing you to focus on getting your display up and running fast.



20bit Processing

Colors mapped to perfection

The Wall All-in-One offers 20bit processing to present exact color mapping with faultless accuracy. Deeper bit depth at low grayscale also delivers extraordinary contrast ratio and smooth, natural tones.

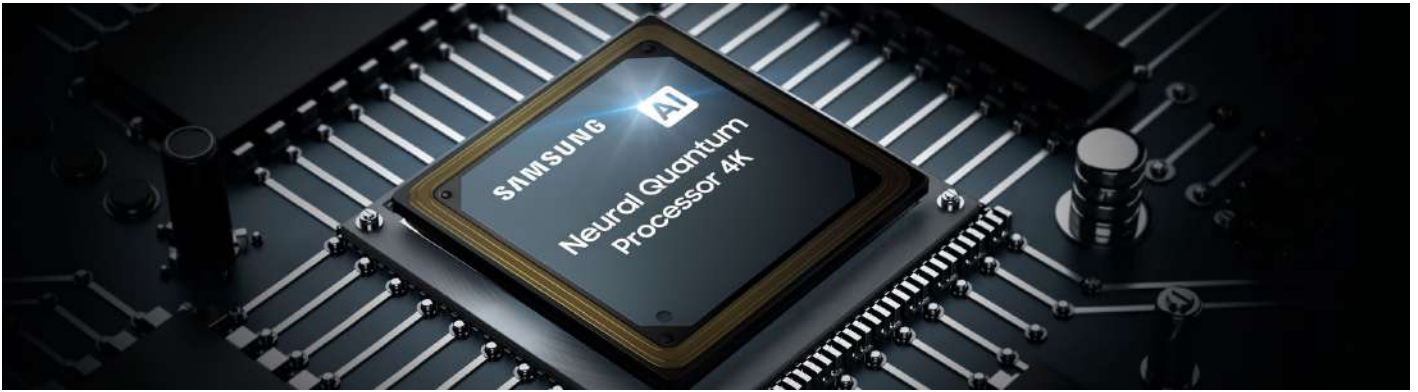


Linear Grayscale

Continuous natural shading

A precise linear grayscale showcases intricacies in every scene, delivering textures, volume and continuous shadow details. The elevated continuity pulls you further into your content for unbroken immersion.

Key features



Neural Quantum Processor 4K

Instant AI optimization

Every second of content is instantly analyzed and optimized for perfect picture quality. The powerful AI processor delivers superior visuals in any size up to 4K* resolution, enhancing contrast and removing noise.

* The upscaling resolution may vary based on the resolution support of individual models.



MICRO HDR

Dazzling dynamic range

Reimagine the limits of conventional screens with advanced HDR picture refinement technology to illuminate ideal peak brightness and contrast in every scene for precise, true-to-life imagery.

* HDR support may vary depending on viewing conditions and specifications.

MICRO Motion

Smooth, seamless motion

Every motion becomes sharper, with greater clarity. The Wall All-in-One automatically converts standard 60Hz signals to 120Hz, removing motion judder in fast-paced action for smoother streams and a seamless viewing experience, every time.



Business applications



* Images are simulated and for illustration purpose only.

Specifications

Model		IAB		
		146" 4K	146" 2K	110" 2K
Physical Parameter	Pixel Pitch	0.84 mm	1.68 mm	1.26 mm
	Pixel Configuration	1 red, 1 green, 1 blue	1 red, 1 green, 1 blue	1 red, 1 green, 1 blue
	Configuration (LxH, per screen)	3840 x 2160 pixels	1920 x 1080 pixels	1920 x 1080 pixels
	Diode Type	Flip-chip RGB LED	Flip-chip RGB LED	Flip-chip RGB LED
	Dimensions (mm, LxHxD, per screen)	3,225.6 x 1,814.4 x 49.5 mm	3,225.6 x 1,814.4 x 49.5 mm	2,423.1 x 1,364.4 x 49.5 mm
	Dimensions (inch, per screen)	145.7 x 1.9 inch	145.7 x 1.9 inch	109.3 x 1.9 inch
	No. of Modules (WxH, per screen)	16 x 12	16 x 12	12 x 9
Weight (per screen)	160 kg	160 kg	99 kg	
Optical Parameter	Brightness (Peak/Max) ⁽¹⁾	1,600 nit / 500 nit	1,400 nit / 500 nit	1,600 nit / 500 nit
	Contrast Ratio ⁽²⁾	24,000 : 1	22,000 : 1	24,000 : 1
	HDR Compatibility	LED HDR / HDR10 support / AI Picture	LED HDR / AI Picture	LED HDR / AI Picture
	Viewing Angle - Horizontal	170°	170°	170°
	Viewing Angle - Vertical	155°	155°	155°
	Bit Depth	16 bit (Internal processing 20bit)	16 bit (Internal processing 20bit)	16 bit (Internal processing 20bit)
	Color Temperature - Default	6,500K ± 500K (Floating bin)	6,500K ± 500K (Floating bin)	6,500K ± 500K (Floating bin)
Color Temperature - Adjustable	2,800K ~ 10,000K	2,800K ~ 10,000K	2,800K ~ 10,000K	
Electrical Parameter	Video Rate	50/60 Hz/100/120 (FRC) Hz	50/60 Hz/100/120 (FRC) Hz	50/60 Hz/100/120 (FRC) Hz
	Input Power Range	100~240 VAC, 50/60 Hz	100~240 VAC, 50/60 Hz	100~240 VAC, 50/60 Hz
	Power Consumption - Max	1700 (W/Screen)	1240 (W/Screen)	900 (W/Screen)
	Power Consumption - Typ	1100 (W/Screen)	860 (W/Screen)	650 (W/Screen)
	Heat Generation - Max	5800 (BTU/Screen)	4231 (BTU/Screen)	3071 (BTU/Screen)
	Heat Generation - Typ	3753 (BTU/Screen)	2934 (BTU/Screen)	2218 (BTU/Screen)
	Refresh Rate	3,840 Hz	3,840 Hz	3,840 Hz
Visual Refresh Rate	7,680 Hz	7,680 Hz	7,680 Hz	
Operational Parameter	Power Redundancy	No	No	No
	Working Temperature / Humidity	0°C~+40°C / 10%~80%RH	0°C~+40°C / 10%~80%RH	0°C~+40°C / 10%~80%RH
	Storage Temperature / Humidity	-20°C~+45°C / 5%~95%RH	-20°C~+45°C / 5%~95%RH	-20°C~+45°C / 5%~95%RH
	IP Rating	IP20	IP20	IP20
	LED Lifetime	150,000 hours	150,000 hours	150,000 hours
Connectivity / Sound	Controller	Built-in	Built-in	Built-in
	Input (Video)	DP1.2 (1), HDMI 2.0 (3), USB 2.0 (2)	DP1.2 (1), HDMI 1.4 (3), USB 2.0 (2)	DP1.2 (1), HDMI 1.4 (3), USB 2.0 (2)
	Output	Audio (Stereo mini Jack) / eARC	Audio (Stereo mini Jack) / eARC	Audio (Stereo mini Jack) / eARC
	WiFi / BT	O / O	O / O	O / O
	External Control	RS232C(in), RJ45	RS232C(in), RJ45	RS232C(in), RJ45
	Speaker	10W 2ch	10W 2ch	10W 2ch
	Safety	62368-1, 60950-1	62368-1, 60950-1	62368-1, 60950-1
Certification	EMC	Class A	Class A	Class A
	Eye-protection	TUV Low Blue Light	TUV Low Blue Light	TUV Low Blue Light
	Fire-protection	N/A	N/A	N/A
	Service	Service	Service	Service
Features	Operating System	Tizen 6.5	Tizen 6.5	Tizen 6.5
	MagicINFO	Yes	Yes	Yes
	Sensor	Temperature, Eco Sensor	Temperature, Eco Sensor	Temperature, Eco Sensor
	Other	AI Picture, LED HDR, HDR10, Dynamic Peaking	AI Picture, LED HDR, Dynamic Peaking	AI Picture, LED HDR, Dynamic Peaking
	Other SW Features	Workspace (Microsoft365/VMWare/RDP), Auto Source Switching & Recovery, Dicom Simulation Mode, SmartView+(PC)	Workspace (Microsoft365/VMWare/RDP), Auto Source Switching & Recovery, Dicom Simulation Mode, SmartView+(PC)	Workspace (Microsoft365/VMWare/RDP), Auto Source Switching & Recovery, Dicom Simulation Mode, SmartView+(PC)
Accessories	Accessories (in-box)	Décor Frame, Frame Kit, Buffer parts (18 Modules, 1 T-Con, 1 SMPS)	Décor Frame, Frame Kit, Buffer parts (18 Modules, 1 T-Con, 1 SMPS)	Décor Frame, Frame Kit, Buffer parts (12 Modules, 1 T-Con, 1 SMPS)
	Remote Control	IR Remote Cotroller	IR Remote Cotroller	IR Remote Cotroller
Package	Box Dimension (mm, WxHxD)	2,000 × 2,162 × 1,000	2,000 × 2,162 × 1,000	2,847 x 1,582 x 398
	Package Weight (per cabinet)	301 kg	301 kg	154 kg
Special Installation	Curve	N/A	N/A	N/A
	Inclination	N/A	N/A	N/A
	Rotation	N/A	N/A	N/A
	Other ⁽³⁾	Side by Side Installation with additional frame kit (up to 4 screens)	Side by Side Installation with additional frame kit (up to 4 screens)	Side by Side Installation with additional frame kit (up to 4 screens)

(1) Peak value according to IDMS (Information Display Measurement Standard)

(2) Measured under 10lux light Test condition. Contrast in darkroom exceeds 1000000:1

(3) optional structure required

About Samsung Electronics Co., Ltd.

Samsung Electronics Co., Ltd. inspires the world and shapes the future with transformative ideas and technologies. The company is redefining the worlds of TVs, smartphones, wearable devices, tablets, digital appliances, medical equipment, network systems, and semiconductor and LED solutions. For the latest news, please visit the Samsung Newsroom at news.samsung.com.

LED Signage

For more information about Samsung The Wall, visit www.samsung.com/business or www.samsung.com/displaysolutions

Copyright © 2022 Samsung Electronics Co. Ltd. All rights reserved. Samsung is a registered trademark of Samsung Electronics Co. Ltd. Specifications and designs are subject to change without notice. Non-metric weights and measurements are approximate. All data were deemed correct at time of creation. Samsung is not liable for errors or omissions. All brand, product, service names and logos are trademarks and/or registered trademarks of their respective owners and are hereby recognized and acknowledged.

Samsung Electronics Co., Ltd.
416, Maetan 3-dong, Yeongtong-gu, Suwon-si, Gyeonggi-do 443-772, Korea